

- LINEAR RAIL : E72
 . Material : Steel
 . Surface finish : Zinc plating
 . Weight : 2,75 Kg/m

- CARRIER :
 . Material : Steel
 . Surface finish : Nitrotec

. CARRYING CAPACITY (KG) :

| | |
|-----|-----|
| G70 | G72 |
| 160 | 120 |
| 80 | 60 |

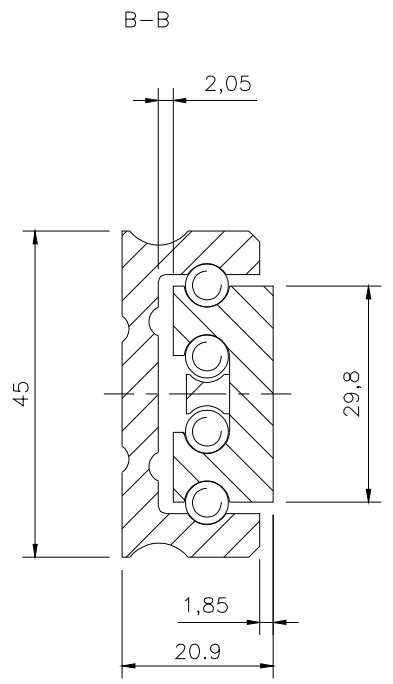
. WEIGHT (KG) :

| | |
|------|------|
| G70 | G72 |
| 0,28 | 0,18 |

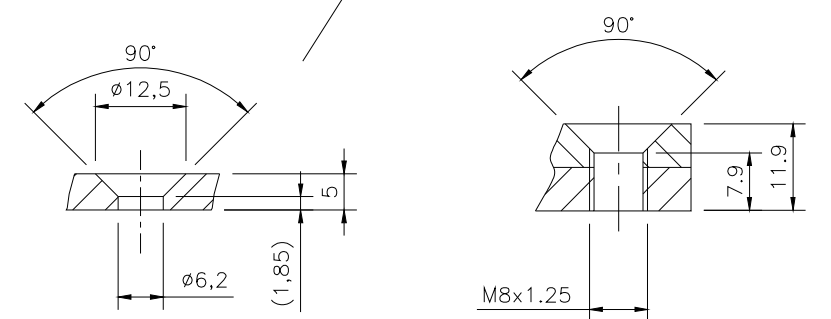
. NB OF BALL BEARINGS :
 . BEARINGS $\varnothing 6$: Steel

| | |
|-----|-----|
| G70 | G72 |
| 58 | 32 |

- OPTIONS :
 Different rail lengths, \varnothing and hole centres to customer's requirement.



Recommended drillings



Dimensions in mm

| |
|-----------------|
| E72 - G70 / G72 |
| FT 086 - STEEL |
| 19.02.2007 |

CHAMBRELAN BP 995 - 68 Bd Jules DURAND
 www.chambrelan.com 76061 LE HAVRE CEDEX - FRANCE
 Tel : +33 (0)2.35.24.62.80 - Fax : +33 (0)2.35.25.02.00
 info@chambrelan.com - www.chambrelan.com
 FILIALE : info@profilscope.de - www.profilscope.de



STANDARD VERSION, NO FIXING HOLES IN RAIL.
 DO NOT REMOVE CARRIERS FROM LINEAR RAILS !

In a constant effort of improvement, the company reserves the right to modify its products without notice. No contractual information.