

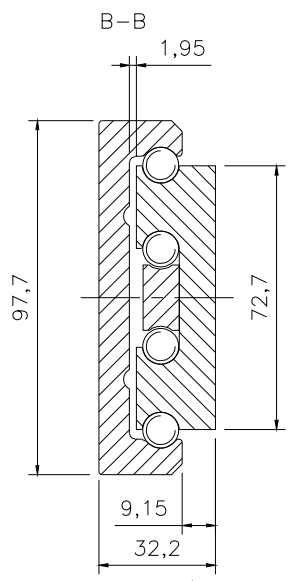
- LINEAR RAIL : E98  
 . Material : Steel  
 . Surface finish : Zinc plating  
 . Weight : 8,6 Kg/m

- CARRIER :  
 . Material : Steel  
 . Surface finish : Nitrotec

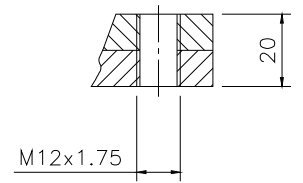
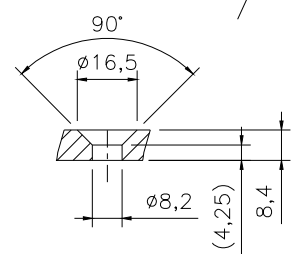
. CARRYING CAPACITY (KG) :	G12
	600
	400
. WEIGHT (KG) :	2,52
. NB OF BALL BEARINGS :	76
. BEARINGS $\phi$ 10 :	Steel

- OPTIONS :  
 Different rail lengths,  $\phi$  and hole centres to customer's requirement.

**STANDARD VERSION, NO FIXING HOLES IN RAIL.  
 DO NOT REMOVE CARRIERS FROM LINEAR RAILS !**



Recommended drillings



Dimensions in mm

E98 - G12
FT 087 - STEEL
19.02.2007

**CHAMBRELAN** BP 995 - 68 Bd Jules DURAND  
 76061 LE HAVRE CEDEX - FRANCE  
 Tel : +33 (0)2.35.24.62.80 - Fax : +33 (0)2.35.25.02.00  
 info@chambrelan.com - www.chambrelan.com  
 FILIALE : info@profilscope.de - www.profilscope.de

(1) End stops for transport only.

In a constant effort of improvement, the company reserves the right to modify its products without notice. No contractual information.