

- LINEAR RAIL : E53
 . Material : Steel
 . Surface finish : Zinc plating
 . Weight : 1,7 Kg/m

- CARRIER :
 . Material : Steel + Plastic
 . Surface finish : Nitrotec

. CARRYING CAPACITY (KG) :

	G53	G57
	60	50
	30	25

. WEIGHT (KG) :

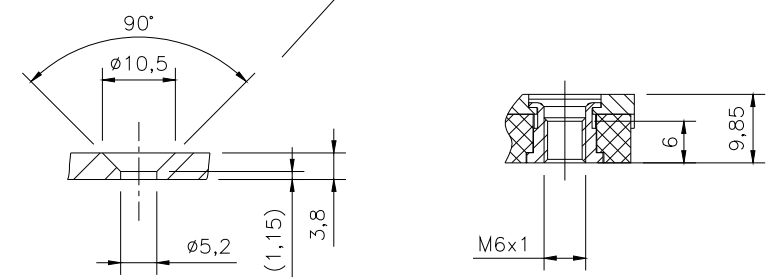
	0,14	0,10
--	------	------

. NB OF BALL BEARINGS :
 . BEARINGS $\varnothing 5$: Steel

	68	44
--	----	----

- OPTIONS :
 Different rail lengths, \varnothing and hole centres to customer's requirement.

Recommended drillings



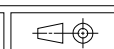
! It is imperative that the end stops on the rail are equal or greater in height than the carrier itself.

Dimensions in mm

E53 - G53 / G57

FT 089 - STEEL

16.05.2007



(1) End stops for transport only.

CHAMBRELAN BP 995 - 68 Bd Jules DURAND
 76061 LE HAVRE CEDEX - FRANCE
 Tel : +33 (0)2.35.24.62.80 - Fax : +33 (0)2.35.25.02.00
 info@chambreлан.com - www.chambreлан.com
 FILIALE : info@profilscope.de - www.profilscope.de

! STANDARD VERSION, NO FIXING HOLES IN RAIL.
 DO NOT REMOVE CARRIERS FROM LINEAR RAILS !

In a constant effort of improvement, the company reserves the right to modify its products without notice. No contractual information.