

- LINEAR RAIL : D409
 . Material : Aluminium
 . Surface finish : Anodised
 . Weight : 0,26 Kg/m

- CARRIER :
 . Material : Aluminium
 . Surface finish : Hard anodised

. CARRYING CAPACITY (KG) :

AL26
5
2

. WEIGHT (KG) :

0,05

. NB OF BALL BEARINGS :
 . BEARINGS $\phi 4$: Steel

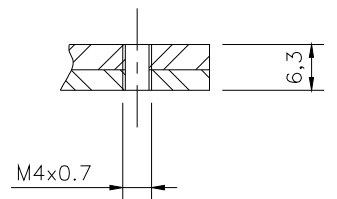
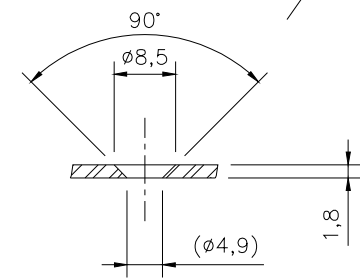
64

- OPTIONS :
 Different rail lengths, ϕ and hole centres to customer's requirement.

STANDARD VERSION, NO FIXING HOLES IN RAIL.
 DO NOT REMOVE CARRIERS FROM LINEAR RAILS !

In a constant effort of improvement, the company reserves the right to modify its products without notice. No contractual information.

Recommended drillings



Dimensions in mm

D409 - AL26
FT 091 - AGS
19.02.2007

(1) End stops for tranport only.

CHAMBRELAN BP 995 - 68 Bd Jules DURAND
 76061 LE HAVRE CEDEX - FRANCE
 Tel : +33 (0)2.35.24.62.80 - Fax : +33 (0)2.35.25.02.00
 info@chambreлан.com - www.chambreлан.com
 FILIALE : info@profilscope.de - www.profilscope.de